

DELISA MILLER



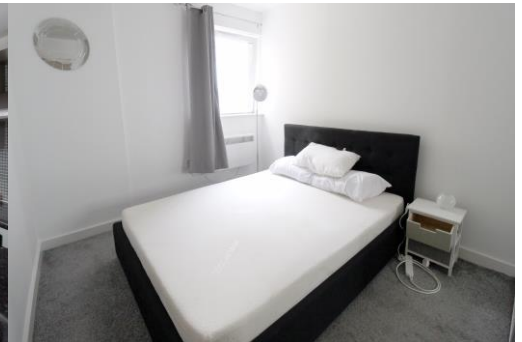
2 Double Bedroom Apartment

Furnished

Easy access to city centre

Two Bathrooms Including Ensuite

Secure Allocated Parking



Hulme High Street
Manchester, M15 5JP

Monthly Rental Of
£850

External

Double glazed window to the side aspect.

Master Bedroom 11'2 x 10'8

Double glazed window. Wall mounted electric heater, television and telephone point.

Balcony

Decked balcony with astro turf cover.

Master Bedroom

Family Bathroom

Recently modernised three piece bathroom suite with a panelled bath with waterfall mixer taps and mixer shower over. Low level WC. Vanity wash hand basin with waterfall mixer taps. Tile throughout, walls and floor. Wall mounted heater.

Bedroom Two 8'9 x 8'9

Double bedroom, double glazed window to the side. Telephone point. Wall mounted heater.

Open Plan Living Room 23'2 x 11'5 x 16 max into dining area

Continuation of laminate flooring, double glazed double doors opening onto balcony. Television and telephone points. Wall mounted electric heater. Additional double glazed window to the side. Room is open through to the kitchen diner.

Open Plan Living Room

Dining Area

Kitchen

With fitted wall and base units and roll top work surfaces over. Integrated electric oven, ceramic four ring electric hob with extractor over. Space for fridge/freezer and plumbing for a washer/dryer. Built in breakfast bar. One and a half bowl single drainer stainless steel sink with mixer over.

