



**Fantastic Two Bedroom Apartment**

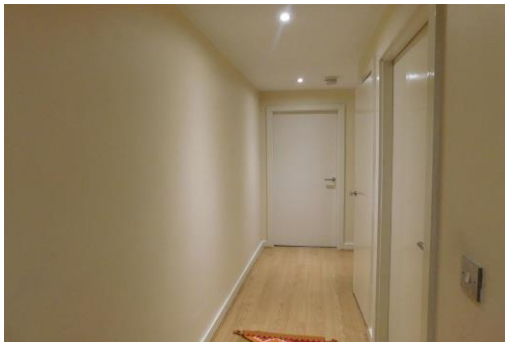
**Offered with no chain**

**Family Bathroom & Private En-suite**

**Popular Central Location**

**All Appliances Included**

**Open Plan Living Room & Kitchen/Dining Area**



**59 Life Building**  
Hulme, M15 5JR

**£139,995**

### **Entrance Hall**

Laminate flooring throughout. Ceiling spotlights. Access to bedrooms, bathroom, storage cupboard & living room/kitchen. Electric heating. Telecom system for entry. Smoke alarm fitted.

### **Living Room** 5.09m (16' 8") x 3.53m (11' 7")

Fully furnished throughout. Laminate flooring throughout. Ceiling light point. Electric heating. Double glazing to the rear of the property. Curtains fitted. Access to balcony.

### **Living Room**

### **Kitchen/Dining Area** 2.40m (7' 10") x 2.70m (8' 10")

Fully fitted integrated appliances. Fridge/freezer. Oven, hob & cooker hood. Dishwasher. Ceiling spotlights. Laminate flooring throughout. Electric heating. Smoke alarm fitted. Dining set included.

### **Bedroom One** 2.88m (9' 5") x 2.92m (9' 7")

Spacious bedroom. Fully furnished. Laminate flooring throughout. Blinds fitted. Electric heating. Double glazing to the front of the property. Ceiling light point.

### **En-Suite** 1.90m (6' 3") x 1.68m (5' 6")

Three piece bathroom suite. Ceiling light point. Lino flooring throughout. Standing shower, toilet & wash basin.

### **Bedroom Two** 2.98m (9' 9") x 3.80m (12' 6")

Spacious bedroom. Fully furnished. Laminate flooring throughout. Ceiling light point. Electric heating. Double glazing to the rear of the property.

### **Bathroom** 2.64m (8' 8") x 2.40m (7' 11")

Three piece bathroom suite. Bath & shower combined, toilet and wash basin. Very spacious. Ceiling light point. Lino flooring. Electric heating.

